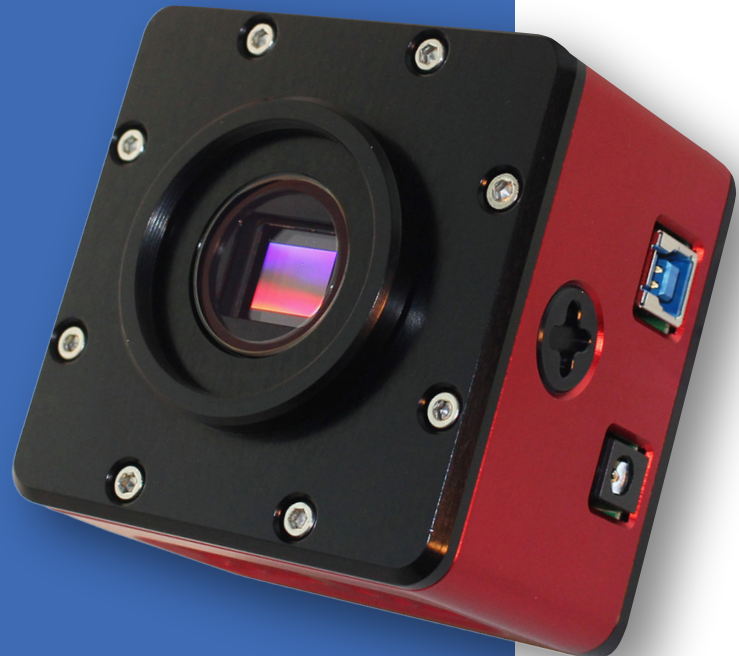


# ACIS SERIES

The ACIS Series is optimized to maintain a suitable level of cooling without compromising its adaptability. It is characterized by high frame rates and small mechanical footprint.

Utilizes modern CMOS sensors with global shutter, enabling accurate capture of dynamic scenes without rolling shutter artifacts. Its cost-effective and compact design makes it perfect for OEMs requiring space-constrained system integration.

- High frame rates
- Efficient cooling
- Compact design to fit in the tightest places
- High-sensitivity imaging
- Exposure up to 1 hour
- Multiple operating modes
- Extremely versatile



# ACIS Technical Specifications

	<b>ACIS 2.4</b>	<b>ACIS 7.1</b>	<b>ACIS 12.3</b>
Image sensor	Sony IMX249 CMOS (Mono/Color)	Sony IMX428 CMOS (Mono/Color)	Sony IMX304 CMOS (Mono/Color)
Resolution	1936 × 1216	3216 × 2208	4112 × 3008
Sensor diagonal (effective pixels)	13.4 mm (11.4 mm x 7.2 mm)	17.6 mm (14.5 mm x 10 mm)	17.6 mm (14.2 mm x 10.4 mm)
Pixel size	5.86 μm	4.5 μm	3.45 μm
Full well capacity	33 000 e <sup>-</sup>	25 000 e <sup>-</sup>	~11,000 e
Read noise	3 e <sup>-</sup>	3 e <sup>-</sup>	2.4 e <sup>-</sup> at low gain
Dark current	0.03 e <sup>-</sup> /p/s at -10°C	0.03 e <sup>-</sup> /p/s at -10°C	~0.027 e <sup>-</sup> /p/s at -10°C
Cooling capacity	35°C below room temperature	35°C below room temperature	35°C below room temperature
Mount type	M42 × 0.75 (T-mount) or 1"- 32 UN 2A (C-Mount)	M42 × 0.75 (T-mount) or 1"- 32 UN 2A (C-Mount)	M42 × 0.75 (T-mount) or 1"- 32 UN 2A (C-Mount)
ADC	12 bit	12 bit	12 bit
Back focus distance	13.5 mm ±0.5	13.5 mm ±0.5	13.5 mm ±0.5
Reading mode	Global Shutter	Global Shutter	Global Shutter
Exposure range	0.001s to 1 hour	0.001s to 1 hour	0.001s to 1 hour
Frame rate	31 FPS	25 FPS	15.5 FPS
Maximum current consumption	1.3 A	1.3 A	1.3 A
Power supply	12VDC 5A	12VDC 5A	12VDC 5A